

44

OPEN

solaris *POWER*

DAL 1974 PER CHI NAVIGA

TECHNICAL  
SPECIFICATIONS

44 OPEN

TECHNICAL SPECIFICATIONS

LENGTH OVERALL	13,47 m / 44'18"
WATER LINE LENGTH	11,95 m / 39'20"
BEAM	4,35 m / 14'27"
DRAFT	1,03 m / 3'37"
APPROX. LIGHT DISPLACEMENT	11.500 kg / 25,353 lbs
APPROX. LOAD DISPLACEMENT	14.000 kg / 30,864 lbs
FUEL CAPACITY	1.200 L / 317 US gal
WATER CAPACITY	330 L / 87 US gal
ENGINES	2 x Volvo Penta D6 IPS 500 272 kW / 370 hp 3500 rpm 2 x Volvo Penta D6 IPS 600 320 kW / 435 hp 3500 rpm 2 x Volvo Penta D6 IPS 650 353 kW / 480 hp 3800 rpm
MAX SPEED	33 kn - IPS 500 36,5 kn - IPS 600 39 kn - IPS 650
CRUISING SPEED	22 kn - IPS 500 25 kn - IPS 600 26,5 kn - IPS 650
CABINS	2
BATHROOMS	1
MAX PERSONS CAPACITY	12
DESIGN	Brunello Acampora / Victory Design Solaris Power Design Team

44

SOLARIS POWER 44

ALL THE SEAWORTHY FEATURES OF THE  
SOLARIS POWER RANGE WITH THE LARGEST  
LIVING AREA IN THE CATEGORY.  
NEVER BEFORE HAS A 44-FOOTER  
OFFERED SO MUCH.

O  
P  
E  
N

# THE GREAT SEAGOING CAPABILITIES OF SOLARIS POWER

## SMOOTH SAILING THROUGH THE WAVES AND A DRY DECK IN CHOPPY SEAS

The sharp shape of the bow and the pronounced flare, softens the passage through the waves and keeps the deck dry.

## GREAT STABILITY WHILE CRUISING AND AT ANCHOR

The hull shape guarantees great stability and comfort when cruising and at anchor, without the need for stabilizers.

## LOW FUEL CONSUMPTION RESULTING IN EXCELLENT RANGE

The advanced studies on the shapes of the hull, ensure low fuel consumption, resulting in excellent range and reduced CO<sub>2</sub> emissions. One example, the 48 Open at a cruising speed of 26 knots only needs 4.8 litres per mile.

## EFFICIENT CRUISING BOTH IN DISPLACEMENT AND IN PLANING MODE

Unlike ordinary boats with planing hulls, Solaris Power are capable to cruise steadily and without roll even in displacement mode from 10 to 14 knots.



## THE LATEST PROPULSION TECHNOLOGY

Solaris Power yachts feature cutting-edge propulsion working in synergy with the shape of the hull. This is the outcome of intense collaboration between Victory Design and Volvo Penta. Since 2005 Brunello Acampora has been studying shapes that are optimised for the

IPS, including 'azimuth pods' for planing hulls; having found they generate huge performance improvements. Moreover, the compactness of the propulsion apparatus yields a noticeable increase of living space: the interiors of these boats compare favourably with much bigger

yachts, and make the tender easy to stow, launch and haul.

## EASY DOCKING THANKS TO THE JOYSTICK

Docking manoeuvres are simplified thanks to the joystick and the azimuth pods, even with a single person at the controls.



## LOW NOISE LEVEL AND ZERO VIBRATIONS

The absence of the rotating masses of the shaft line and the engine exhausts in the propeller pods ensure absence of vibrations and low noise.



## SPACIOUS AND WELL VENTILATED ENGINE ROOM

Offering easy access to the engine itself and to the other systems.



INNOVATIONS FOR  
MORE ON-BOARD COMFORT



WALKAROUND

The decks of all models include lateral walkways that afford easy and safe movement from bow to stern.



FOLD-OUT BULWARKS

These can be opened for enhanced enjoyment of the cockpit, increasing its surface by 20%.



VERY LARGE SUNBEDS

All Solaris Power have the bow sundeck. Open models also offer an aft sundeck.



HYDRAULIC GANGWAY

The hydraulic gangway turns into a comfortable swim ladder.



TENDER GARAGE

Under the aft opening sundeck there is a large garage that can be used for the tender and various water toys.



LAYOUT IN MULTIPLE VERSIONS

The internal and external layouts are available in several versions to suit the tastes and needs of owners.





LAYOUTS

MAIN DECK  
Optional Fold-out Bulwarks



LOWER DECK  
Version A



LOWER DECK  
Version B



LOWER DECK  
Version C













MAKE YOUR SOLARIS POWER UNIQUE



HULL AND DECK



WHITE



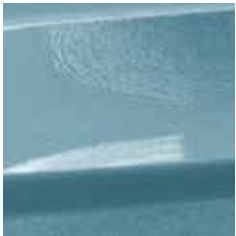
EXTREME SILVER



SOLARIS BLUE



JAZZY BLUE



SILVER LAKE



CHAMPAGNE

WOODS



OAK (STD)



WALNUT (OPT)

OUTDOOR UPHOLSTERY



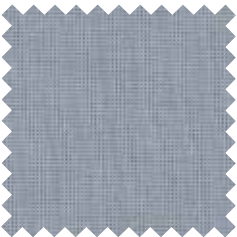
ICE CREAM



CREAM

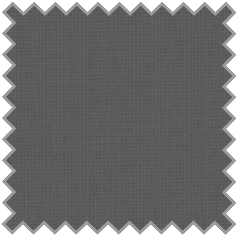


CAMEL



ALUMINIUM

BIMINI



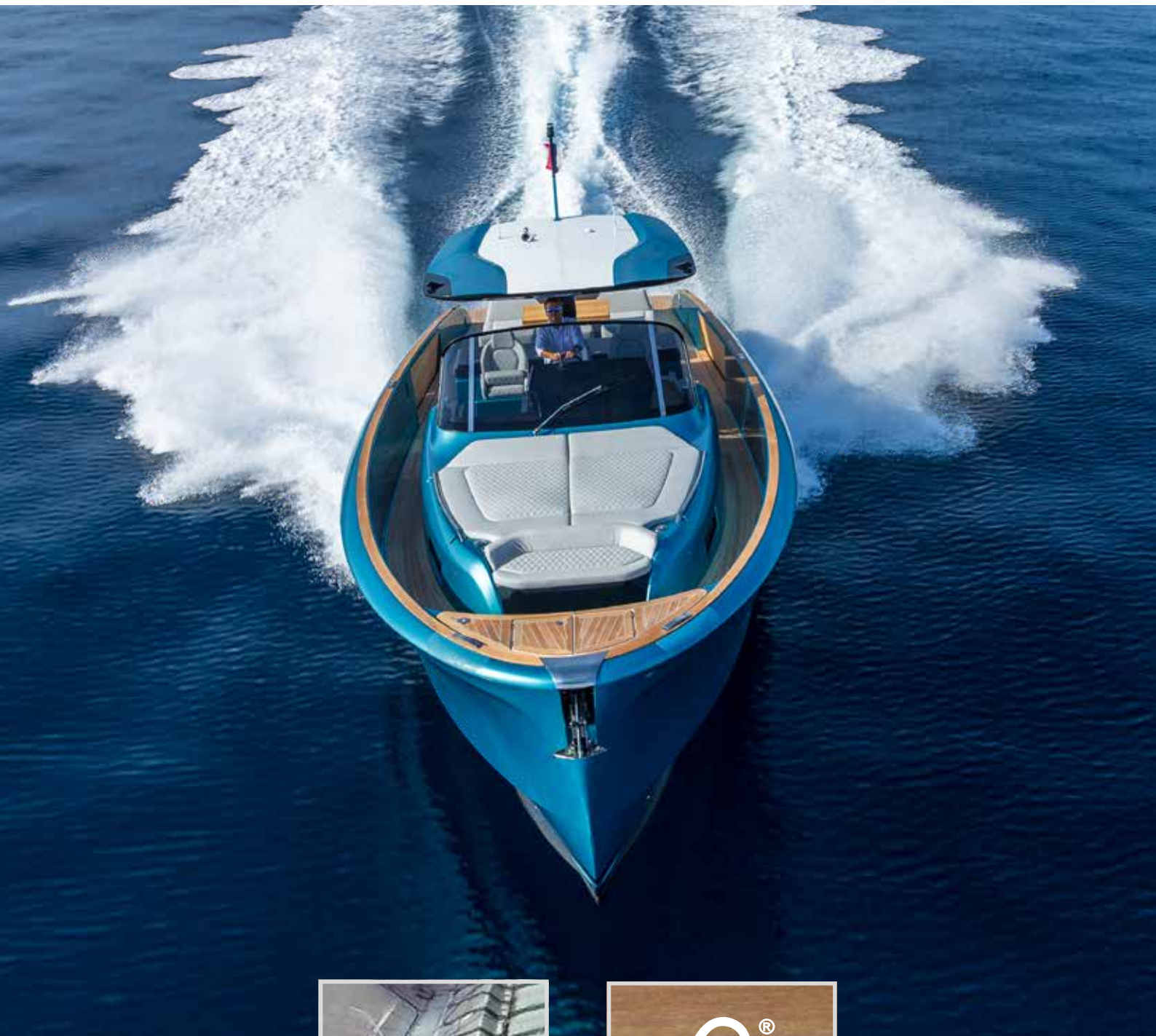
BLACK



IVORY



RESPECT FOR THE ENVIRONMENT



INFUSION LAY-UP SYSTEM



FSC CERTIFIED WOOD SUPPLY

STANDARD SPECIFICATIONS

HULL AND DECK

- Stainless steel deck equipment
- Electric winch 1000 W windlass with telescopic hawse and remote control
- Galvanized delta anchor kg. 16 and 50mt 8mm chain
- Permanent stern platform
- Bathing ladder
- Bow sun bathing mattresses and stern seats
- Plexiglass windscreen
- Sliding door for cabins access
- Acustic alarm for water in stern and bow bilges
- Midboat bollards (1 each side)
- Fenders plugs
- Zinc anodes

HELM CONSOLE

- Control station with instrumentation
- Three pilot chairs
- Throttle lever - electric inverter
- 12" Volvo Penta navigation display
- Rudder indicator
- Echo sounder, log milometer and water temperature releuator with tridata DST 800 system
- Fuel and water indicator
- VHF Garmin 210i con DSC system
- Compass

COCKPIT

- Lifejacket peak with line
- Outdoor fixed table with double stainless steel support

OWNER'S CABIN

- Left wardrobes with shelves
- Right storage cabinet openable portlights
- Reading lights
- Double bed with mattress
- Led illumination
- Partially vinyl covered ceiling
- Curtains predisposition

OWNER'S BATHROOM

- Bathroom accessories
- Wardrobe and shelves
- Detached shower
- Glass washbasin
- Led lights
- Openable portlight (1)
- Mirror
- Ceramic electric WC and control panel 3/4 full

PROPULSION SYSTEM AND ENGINE ROOM

- VOLVO PENTA IPS 500 (320 Kw / 435 Hp) engines
- Electronic blowers (nr. 1)
- Hatch and stainless steel ladder
- Boiler 220V 25 lt.
- Automatic/manual fire exstinguisher 12 kg.
- Fuel filters water separator
- Inspection lights
- Bow watertight bulkhead
- Stainless steel gasoline tank 1200lt

STORAGE CABIN

- Led lights
- Planking
- Storage shelves



BOW PEAK

- Chain peak
- Winch remote control
- Inspection hatch
- Fresh water shower for chain washing

SYSTEMS

- Remote control for engines power shut-off
- Fire extinguisher (one in each cabin)
- Electric equipment composed by: engines battery set 170Ah 12V
- Auxiliary services battery set 105Ah 12V
- Battery charge 60Ah 12V
- 12V led illumination in cabins
- Battery cut off switch
- Bilges output system with 3 pumps (2 two of them automatics)
- Fresh water pump
- VHF transceiver system
- Electric WC system with fresh water and 75lt black water tank
- 32Ah quay plugs with cable
- Grey water output system with electropump and one tank 105 lt.
- Stainless steel fresh water tank 330lt

HARD TOP

- Mast with navigation lights
- Acoustic alarm
- Navigation lights

OUTDOOR KITCHEN

- Two basins covered stainless steel sink
- Covered worktop
- 90lt fridge
- Popup sink
- Dustbin
- Storage cabinets

DISCLAIMER AND COPYRIGHTS

Solaris Power Yachts reserves the right to change descriptions, modify, or substitute products in this catalogue without notice. Solaris is a registered trademark of Solaris

Yachts Srl, other names may be registered trademarks of their respective owners. Solaris Power © 2023. All rights reserved.



