

60 SUNREEF POWER



Sunreef Yachts is the world's leading designer and manufacturer of luxury catamarans. Comfort, high performance & advanced technology. Launched in 2022, 60 Sunreef Power is an exclusive motor yacht blending extreme comfort, elegance and bespoke interior design with cutting edge technology. She is part of the popular Sunreef power range that was awarded "best power driven catamaran" at the 2020 World Yacht Trophies. The 60Power is a majestic yacht boasting modern, sporty lines offering unmatched stability, and seaworthiness in supreme luxury. The condition of the Boat are like a new Boat. Fully Equipped.

YEAR	:	2020
L.O.A.	:	18,30 M
BEAM	:	10,70 M
DRAFT	:	1,50 M
DIESEL	:	2 x 5000 L
WATER	:	2 x 800 L
ENGINES	:	2 x MAN I6 850 hp
FLAG	:	BRITISH
LYING	:	U.A.E.
PRICE	:	€5.800.000 + VAT if Due

All particulars are believed to be correct, but not guaranteed

60 SUNREEF POWER

LAYOUT:

The 60 Sunreef Power offers a four cabin layout accommodating up to eight guests overnight. The two identical guest cabins are in bow of the starboard and port hulls and both offer double beds and spacious en-suite bathrooms. The lavish master suite is found on the portside of the main deck and boasts a supreme level of comfort with a king size bed, and walk in dressing room. In the en-suite bathroom you will find a walk-in rainfall shower and contemporary design that reflects exclusive style. Power 60 also offers accommodation for a full-time professional crew.

NAVIGATION:

Compass (size 135mm)
Chronometer and barometer
Upgrade RAYMARINE: 2x Axiom XL 16'
Radar RD424HD 24" 4kW 608mm digital radome radar
Evolution autopilot
Depth, speed & temp sensor
Wind sensor
GPS, Ray90 VHF with dual station,
Searchlight
Wireless autopilot controller
4G/LTE Wifi antenna worldwide UPGRADE
2 External cameras with color and night vision UPGRADE
Navigation station on flybridge and in saloon

All particulars are believed to be correct, but not guaranteed.

EQUIPMENT:

Extension of fuel tanks to 2x 5000L (from 2x 3000L) UPGRADE
Antivibration system (thrust bearing with CV joint) UPGRADE
Bow thruster (1 pc) UPGRADE
Trolling valves on gearboxes UPGRADE
Fuel polishing system
Engine speed controls on flybridge and in saloon
Engine room sound insulation
Rope cutters on the propeller shafts
Hydraulic aft platform 1000kg UPGRAD
Composite hard top bimini on the flybridge with windows and integrated lights
Rigid wave breaking window on flybridge
Hydraulic gangway UPGRADE
Flush hatches on deck for forepeaks
1 x swim ladder on the skirt
Garage for water toys
Additional 2x electric mooring aft winch UPGRADE
Shower head on the cockpit ceiling with mixing valve UPGRADE
Covers set (navigation station, flybridge tables) UPGRADE
6x retractable Stainless Steel Seasmark B400x Cleats instead of standard one
UPGRADE
Generator 11KVA, 50Hz, 230V
Second Generator 22,5KVA, 50Hz, 230V UPGRAD
Lights with LED lamps
Domotic system for lights, controls, and D/C system, including dimmers for ceiling
lights (Domotic system function
Exterior lighting package – under-lighting of fixed furniture on flybridge and cockpit
Underwater lights LED, one color to be chosen along with localization: white or blue
UPGRADE
Electric blinds (plisse) in saloon and cabins UPGRADE
Air conditioning installation in the saloon, galley and cabins: 160 000 BTU/h
UPGRADE
Sunpad area on aft flybridge
Front deck cushions
Jacuzzi on the flybridge UPGRADE

All particulars are believed to be correct, but not guaranteed

Complete rescue equipment with life-rafts for 12 persons UPGRADE
Antifouling (with Epoxy primer)
Launching, name and hailing port inscriptions, Polish export fees
Cockpit and skirts covered with teak UPGRADE
Deck covered with teak UPGRADE Flybridge covered with teak UPGRADE
Hydraulic platform covered with teak UPGRADE
Windlass to 3000W, anchor CQR 80kg + 80m galvanized chain (diameter 13mm DIN)
UPGRADE
Mooring set (8x fender, 4x mooring rope)
Generator 19 kw

AUDIO VISUAL:

Widescreen LED TV 55" with installation (saloon) UPGRADE Lifting system for TV
under ceiling with swivel (TV up to 55") UPGRADE Yamaha Home Cinema Receiver
7.2 + 5x ceiling speakers + 1x active subwoofer UPGRADE 2 waterproof speakers in
the cockpit and 2 in the flybridge UPGRADE Safe UPGRADE

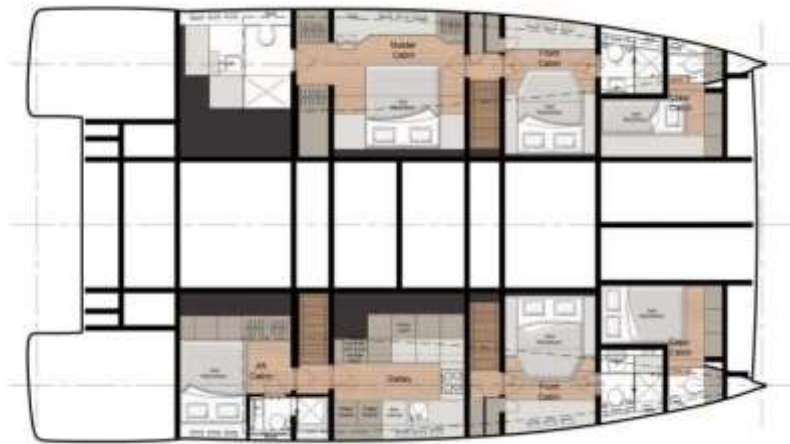
DOMESTIC:

Galley appliances package (Bosch or/and Siemens): refrigerator with freezer,
dishwasher, electric oven, cooker hood
Washer&dryer (one item) (Bosch or Siemens)
Bar module in cockpit UPGRADE
Sink with retractable faucet for the bar module UPGRADE
Ice maker for the bar module UPGRADE
Low fridge for the bar module UPGRADE
Electric Stainless Steel BBQ UPGRAD

All particulars are believed to be correct, but not guaranteed



All particulars are believed to be correct, but not guaranteed



All particulars are believed to be correct, but not guaranteed