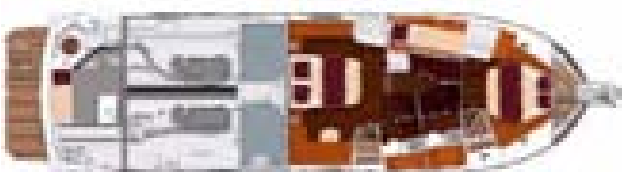
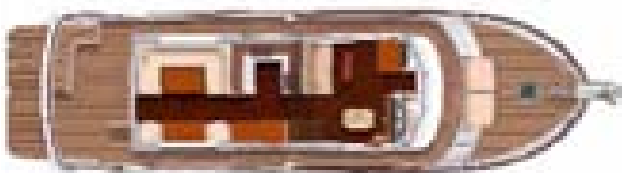


Swift Trawler 52

Inventory list



GENERAL SPECIFICATIONS

• L.O.A*:	17,00 m	55'9"
• Hull length:	15,24 m	50'
• Overall width:	4,92 m	16'2"
• Beam:	4,90 m	16'1"
• Light displacement (EC):	20 490 kg	45,160 lbs
• Air draught**:	6,40 m	21'
• Draught:	1,20 m	3'11"
• Fuel tank:	4 000 l	1,057 US Gal
• Water tank:	800 l	211 US Gal
• Maximum engine power:	2 x 600 HP	2 x 600 HP

* (with aft swimming platform)

** (With polyester hoop bar on flying bridge)

ARCHITECT / DESIGNERS

- Naval Architect: BENETEAU POWER
- Naval Architect: Michel JOUBERT & Bernard NIVELT
- Interior design: Pierre FRUTSCHI

EC CERTIFICATE

- Category B - 16 persons
- Category C - 20 persons

STANDARD EQUIPMENT

CONSTRUCTION

HULL

Composition:

- Sandwich (Polyester resin - Glass fiber / Balsa core)
- White gel coat
- Structural hull counter moulding in monolithic laminate

Profile:

- Semi-floating hull

DECK

Composition:

- Sandwich (Polyester resin - Glass fiber / Balsa core)
- White gel coat
- Diamond tip type non-slip covering
- Structural counter moulding in monolithic laminate

DECK EQUIPMENT

- Plain solid wood bulwark
- Port and starboard gangway doors for shore access
- Hatch under starboard gangway door for access to fuel and water fillers
- Seawater deck wash pumps (2 outlets)

MOORING LINES - GROUND TACKLE

- Anchor platform with stainless steel frame and solid wood boards
- Bow fitting with twin roller
- Horizontal electric windlass Lofran Falkon 1 500 W (chain grab for 12 mm / ½" chain and gipsy head for buoy line)
- Mooring cleat underneath
- Peel strength of windlass 1 600kg / 3,526 lbs - speed 17m/55'9"/min
- Remote control in mooring locker + windlass control from wheelhouse and flying bridge steering stations
- 2 Mooring lockers
- 2 Stainless steel fairleads
- 2 Stainless steel mooring bollard on foredeck
- 4 Stainless steel mooring cleats (2 amidships - 2 aft)
- Bench on foredeck with 2 lockers for storing fenders and mooring ropes

SAFETY ON DECK

- Stainless steel 2 level pulpit with stainless steel guardrails at rear of deck
- Access to foredeck through door in Portuguese bridge
- Stainless steel guardrail on the front of wheelhouse windscreen for safety on Portuguese bridge
- Cockpit pulpit in stainless steel and solid wood
- On flying bridge: Stainless steel pulpit completely surrounding aft of flying bridge with stainless steel guardrails on snap shackles to facilitate launching of dinghy and life raft

COCKPIT

- Self-bailing cockpit
- 2 Alleyway doors to protect cockpit from wind and spray
- Stainless steel stanchion on flying bridge
- L-shaped cockpit bench seat decked in solid wood
- Saloon can be transformed into sunbathing area with mattress - PVC Woven Beige upholstery
- Large cockpit locker with companionway ladder for access to lazarette, engine room and sailor cabin (optional extra)
- Outside ladder for access to flying bridge (secondary access - solid wood steps and twin stainless steel handrail)
- 220 V 50 Ah shore supply with 20 m / 65'7" cable
- Access door to aft swim deck
- Solid wood decked swimming platform with stainless steel area guards and handles to fasten dinghy
- Retractable ladder in swimming platform with solid wood steps and stainless steel handrails
- 4 Tallon marine receivers®

FLY BRIDGE

- Inside stairs to flying bridge from wheelhouse
- Sliding hatch cover in grey-tinted PMMA, foldaway solid wood doors with fastening and blocking system
- Grey tinted windscreen in PMMA
- Steering console with: Steering compass - Steering wheel - Electric engine controls, tiller angle indicator - Rev counter - Fuel gauges - 12 V socket
- Controls for bow and stern thruster, windlass, flaps, lighting, navigation lights and foghorn
- 12 V socket
- Adjustable, swivel Besenconi® pilot seat with armrests
- Removable flying bridge saloon table convertible into sundeck
- U-shaped bench seat with storage lockers
- Cloth cushions and backrests PVC Woven Beige
- Stainless steel handrail
- Console cover Fly + Seat of Fly

to starboard:

- Worktop with sink and hot and cold water mixer tap under pressure
- Ice box or refrigerator (optional)
- Stowage
- Place for electric grill (optional)
- Polyester hoop bar with fitted spotlights and loudspeakers
- Supports aerials, radar and bimini top (optional extras)
- Quarterdeck for storing dinghy or for use as terrace / Sun deck
- Structurally reinforced position for installation of Bezenconi electric crane offered as optional extra to lift dinghy (max load 400Kg / 882 lbs)
- Fixing plates for dinghy
- Companionway hatch in PMMA for direct access to cockpit with stainless steel stairs and solid wood steps
- Space for life raft with stainless steel fixing bolt plates
- Flag pole bracket on starboard aft pulpit

INTERIOR

- Woodwork Alpi Mahogany
- Parquet type laminated floors
- Paragon Beige Cushions (Saloon)

SALOON

- Aft 2 leaved sliding door window with curtains and stainless steel frame
- Sliding, opening side windows with blinds and stainless steel frame
- U-shaped bench seat with cushions and backrests
- Storage under bench seats
- Varnished wood saloon table, electrically adjustable height
- 2 Removable armchairs
- Bar unit with storage and space provided for an encased 32 inch LED TV (optional)
- Storage cupboard with drawer and cubbyholes
- Leather covered stainless steel handrail on ceiling

GALLEY (IN A U-SHAPE ON PORTSIDE)

- Sliding window with blind in front of sink
- Resin worktop with stainless steel 2 basin sink, washing up drainer and bin access
- Mixer tap with hot/cold water under pressure
- 175 litre refrigerator + 45L freezer fitted into wooden cupboard to starboard
- Choice of 3 hob glass ceramic plate with saucepan brackets or gas cooker
- Gas or microwave cooker
- Gas storage locker provided in port alleyway
- Rubbish locker accessed from alleyway
- Extractor hood
- Dishwasher, 6 persons
- Plentiful storage with cubbyholes and cutlery drawer
- Suspended shelf above worktop between galley and saloon
- Spotlights LED and Standard equipment: Sockets 220V
- Wheelhouse access step with leather covered stainless steel handrail

STEERING STATION

- Raised steering station
- Grey-tinted glass windscreen with 3 speed demister system
- Stainless steel windscreen wipers with washer
- 2 Sliding doors for access to catwalks
- 2 Windows with blinds fitted to either side of wheelhouse
- Inside access stairs to flying bridge with varnished wood handrail
- Lewmar® T44 opening hatch in wheelhouse ceiling
- Electrically adjustable Bezenzon® pilot armchair with retractable footrest - Leather cushions Beige
- Leather covered steering wheel in stainless steel
- Hydraulic assisted steering
- Ergonomic steering console, space for navigation electronics (up to 2 navigation screens of Raymarine® E120 type offered as optional extras) and engine instruments

- engine repeaters with rev counters, pressure and temperature indicators fuel gauges
- Tiller angle indicator
- Flap indicators
- Electric engine control levers
- Steering compass
- Functional controls: Wiper, Demister, Fog horn, Navigation lights, ground tackle, Thrusters, Windlass
- 220 V socket, to starboard
- 12 V socket
- Wide copilot bench seat with wooden shelf, stainless steel handrail and footrest, large storage space under bench
- Chart table, to port, with drawer and storage space, reading spotlight, 220 V socket
- Electrical panel 24 V and 220 V
- CD/MP3, USB, AUX. radio with 2 loudspeakers in wheelhouse and 4 waterproof speakers outside (2 in the cockpit - 2 on flying bridge)
- Companionway stairs to cabins and washroom with leather covered stainless steel handrail
- Extensive space under steering station with windscreen washer tank and access to all control panel connexions, ceiling lighting

2 HEAD COMPARTMENTS

- Shower cubicle completely counter moulded with opaque plexiglass door
- Fitted seating, decked in solid wood
- Opening hull porthole and mechanical ventilation
- Waste water drained by gravity to buffer tank (50 l / 13 US Gal)
- Electric Vacu-flush toilet with sewage tank in cockpit
- Opening hull porthole
- Mixer tap with hot/cold water under pressure
- Mirror
- Toilet accessory rack

OWNER CABIN (CENTRED AMIDSHIPS)

- 2 Large fixed panoramic hull portholes with fitted opening portlights and curtains
- Large central bed (2,02 x 1,70m / 6'8" x 5'7") with lathed bed base and marine mattress
- Background lighting with brightness adjustment and bedside lamps
- Storage
- Shelving
- Hanging locker
- Drawers
- Mirror
- Leather covered stainless steel handrail
- Desk and seating to starboard
- Access door to private bathroom
- 220 V socket

GUEST CABINS (FORWARD)

- Bunks type Island Bed
- Marine mattress
- Storage, Hanging locker, Drawers
- Lighting and reading spotlights
- 1 Opening hatch Lewmar® T44
- 2 Opening hull portholes with curtains
- Bedstead mirror

GUEST CABINS (PORT SIDE)

- 2 Individual bunk berths
- Marine mattress
- Hanging locker, Storage space and reading lamps
- 2 Opening hull portholes with curtains

Other layout versions available (see Optional extras)

ENGINE ROOM AND ENGINES

- 2 Engines CUMMINS® QSC 600HP/HP, 8,3 L / 8.3 liters cubic capacity
- 2 Engines VOLVO® D9 575 HP/HP x (423 Kw), 6 cylinders, 9,4 L / 9.4 liters cubic capacity - Single lever control + VOLVO® Onboard computer
- Maximum engine speed: 2 500 rev/min (reduced emission and reduced consumption for greater range at all engine speeds)
- Foam soundproofing in engine compartment
- Side air intakes
- 2 Electric engine hold ventilators
- Stainless steel shaft lines with end anodes
- Fuel tanks: 2 x 2 000 L / 2 x 528 US Gal with interconnection
- 4 blade propellers
- Access door to engine compartment in cockpit bay
- Extinguishers in engine hold with remote controls
- Inert gas system for engine protection
- Ceiling lighting
- Central batteries under aluminium floor
- ONAN® 7 KVA Generator

ELECTRICITY

- Electrical panel 24 V / 220 V
- Electrical battery switches
- 220 V V shore supply with 20 m / 65'7" cable
- 220 V sockets in saloon, galley, wheelhouse and cabins
- Battery charger 60 Ah
- Inverter 12 V / 24 V
- 12 V sockets on flying bridge and in wheelhouse
- 4 Engine batteries 75 Ah (Gel batteries)
- 4 Service batteries 140Ah and 4 batteries 75Ah (gel) dedicated to thrusters
- Bow and stern thrusters: MaxPower® 160 kg / 353 lbs thrust, tunnel diameter 250mm / 10"
- Lofran Falkon® 1 500 W Electric windlass (1 600 kg / 3,526 lbs peel)
- Electric trim tabs Lenco®
- Navigation lights, in stainless steel
- Mooring light
- 3 Electric windscreen wipers
- 2 Automatic electric bilge pumps
- 2 Engine hold ventilators
- Electric water heater on shore supply or on engine exchanger
- Inside lighting, cockpit, alleyways and flying bridge
- Light dimmers in saloon, cockpit, alleyways, wheelhouse and master cabin
- Generator: 1 Starter battery 110Ah and battery charger 25Ah
- Electric Bezenzoni® armchair in wheelhouse

TRIM LEVEL

	AVANTAGE	ELEGANCE
Refrigerated icebox on Flying Bridge (42 l)	■	■
Cockpit sole natural solid wood + Catwalks rear	■	■
Deck searchlight	■	■
Auto pilot RAYMARINE i70, with control on flying bridge and wheelhouse	■	■
Thru-hull transducer + Loch, speedo and water temperature	■	■
1 Tactile multifunction screen GPS, Touch screen RAYMARINE e95 plotter-sounder on flying bridge	■	■
2 Tactile multifunction screens GPS, Touch screen RAYMARINE e127 plotter-sounder in wheelhouse	■	■
Radar aerial 4kw 72mn digital beam + Windvane + Anemometer	■	■
Twin set VHF coupled to the AIS 650 transponder system	■	■
AIS 650 RAYMARINE (Transmitter - Receiver)	■	■
Catwalks forward + Foredeck in plain solid wood		■
Shore freshwater supply		■
Washer dryer -220V 50HZ		■
Engine compartment camera		■
Aft camera		■
TV LED 32" + Player DVD + BOSE Loudspeakers in saloon		■

OPTIONS

OPTIONAL LAYOUT VERSIONS

CABIN (PORT SIDE) DRESSING ROOM VERSION

- Raised single berth with plentiful storage space, cubbyholes and hanger closet underneath
- Direct access door from master cabin to dressing room + Access door at foot of companionway stairs
- 2 opening portholes

CREW CABIN accessible from cockpit

Headroom: 1,80 m / 5'11"

- Single bed under cockpit bench seat
- Shower
- WC vacu flush
- Basin with hot and cold water mixer tap under pressure
- 2 opening portholes

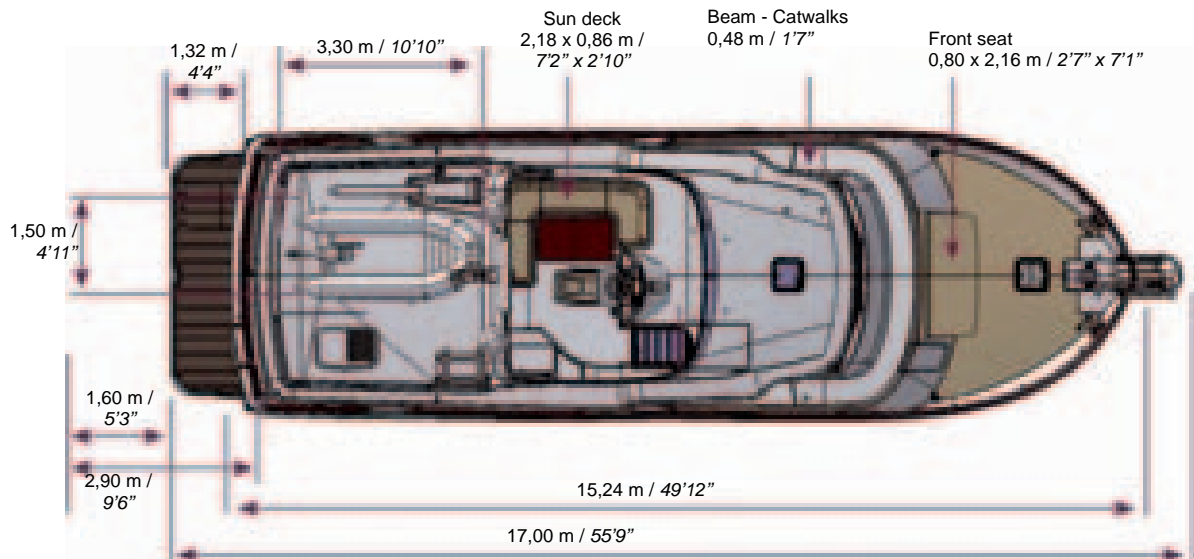
OTHER OPTIONS

- Grey "Perle" hull
- Steel blue colour hull
- Solid wood decked flying bridge cockpit (forward part)
- Aft part of flybridge decked in plain solid wood
- Wheelhouse partition panelled in plain solid wood
- Complete mooring kit: Anchor CGR 34 kg / 75 lbs + Chain 12 mm / 1/2" diameter - Length 86 m / 282'2" - 4 Hawsers 22mm / 7/8" - 6 Fenders
- Cabriolet + Flying bridge bimini top Dune or Silver
- Flybridge dodgers Dune or Silver
- Aft cockpit closing Dune or Silver
- Exterior upholstery PVC Silver piping or PVC Luggage
- Hydraulic crane (Bezenzoni®, G309, max load 400Kg / 882 lbs)

- Hydraulic gangway (Besenzoni®, retractable under cockpit, Length 2,90 m / 9'6")
- Outside wheelhouse curtains - Sunworker - White
- Underwater spotlights under transom
- Thermal imaging camera
- 3rd Camera (Port side)
- 220V electric grill on flying bridge
- 220V Ice maker, 50 Hz
- 11 KVA Generator, 220 V / 50 Hz + Cocoon
- Reversible air conditioning, ice water system 54kBTU (18 000 BTU Wheelhouse, 12 000 BTU Saloon, 12 000 BTU Owner cabin, 6 000 BTU Forward cabin, 6 000 BTU mid Cabin)
- Water system Webasto® heating
- Safe in master cabin
- Rope cutters
- CD/MP3 radio, USB, IPOD + 2 Loud speakers (Owner cabin)
- TV LED 22" + Player DVD/MP3 (Owner cabin)
- mosquito nets (on all hatches and doors)
- Electric winder "type Glendinning" taking extension wharfage 220 V
- PVC Astra saloon cushions
- Saloon upholstery Trajan Navy
- Saloon upholstery Tempo Gold
- Saloon upholstery Ultraleather Promessa
- Saloon upholstery Leather
- Capstan electrical
- Water maker 95 l/h 220 V/24 V / 25 US Gal/hour
- 3rd Engine control and Thrusters, in the cockpit
- Carpet Corail, in the wheelhouse + Owner cabin
- Carpet Corail, in forward cabin + mid Cabin + Passageway
- Antifouling
- PVC Luggage



America/Export: Please note that electric power and appliances may be different and/ or not offered on standard or on option. They would be adapted locally by your dealer.



Some rough indicative surfaces:

Total surface area - Maximum: 81,70 m² / 880 sq ft
 Wheelhouse: 5,30 m² / 57 sq ft
 Saloon + Galley: 13,40 m² / 144 sq ft
 Owner cabin: 12,70 m² / 137 sq ft

